



Find Data. Find Relationships. Find Meaning. Make Decisions.

Criminal Investigation

Solving Crimes More Quickly

“Metatomix’s Criminal Investigation solution allows our law enforcement personnel to solve more crimes in less time. We have solved a higher percentage of crimes, in less time, than ever before.”

Criminals Slipping Through the Cracks

When law enforcement officers are pursuing a criminal, not having all of the needed information in a timely manner endangers the officers and the public. Incident information is vital, but only provides a portion of the full picture. Officers also need several other pieces of information, such as:

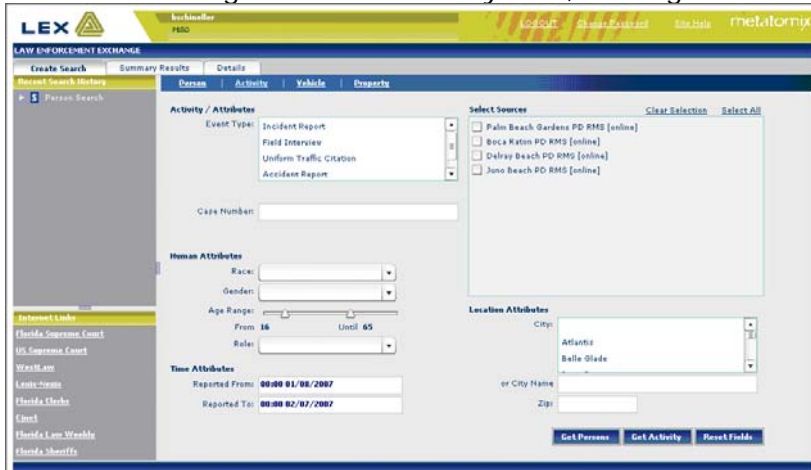
- Are there any warrants outstanding on the suspect?
- Are there any vehicular violations?
- Are there any incidents tied to the suspect’s property?
- Does the suspect have a prior criminal record?
- Is the suspect a violent felony offender?
- Is the suspect in the country legally?

Unfortunately most of this information resides in numerous systems, across multiple jurisdictions. In most cases, officers cannot access this information in a timely manner. They must log in to multiple systems, and in some cases may not even have access to the systems that hold information key to their investigations.

Providing Law Enforcement All of the Information They Need

Metatomix Criminal Investigation (CI) provides law enforcement officers access to all of the information that they need to investigate crimes and collar criminals as quickly and safely as possible. The combination of incident information, outstanding warrants, property and vehicle violations, residency status, prior criminal history – and whatever additional information is held in your law and judicial data systems – gives officers *all* of the information they need to build a case quickly. CI consolidates information from multiple jurisdictions and agencies without any of the entities losing control of their data, a critical element to enable cooperation across diverse jurisdictions. Best of all, this complete set of information is accessed by

users from a single interface...one system, one login.



Build a Complete Case in Real-Time

Key CI features include:

- **Simple intuitive query interface.** Search via easy-to-use web-based interface
- **Secure access.** Facilities to give permissions only to those so designated by department policy
- **360° View.** Gain an *accurate* view of the person or incident being investigated by searching on related elements
- **Automatic alias management.** Alias names embedded within records used to ensure a persons identity is well known from all possible sources
- **Merge results.** Easily combine entities if found to be the same person
- **Incident search.** Search by incident type, location, date, time, characteristics of perpetrator, and/or additional identifying codes, e.g., Incident Number
- **Support for full results printing.** Quickly and easily print results pages
- **Communication security.** Transport all data in a secure manner, using HTTPS protocol
- **Automatic alerts and notifications.** Create flags for those suspects with violent criminal history or sexual offender registrations, or any other risk identifier
- **Digital image and document viewing.** Receives mug shots, digital documents, signatures, and other electronically stored files that are associated with the event or person being investigated.
- **NIEM and GJXDM compatible.** Provides GJXML Data Interchanges and Exportability, and adheres to the National Information Exchange Model (NIEM) and Global Justice XML Data Model (GJXDM) and schema
- **Platform for N-DEX Integration.** Leverage the infrastructure of to participate in the FBI's N-DEX (National Data Exchange) Program



Find Data. Find Relationships. Find Meaning. Make Decisions.

Bringing Criminals to Justice More Quickly and Efficiently

By accessing all of the information you need at the critical moment you need it, you are empowered to make the informed decisions that enable crimes to be solved more quickly and efficiently.

Benefits include:

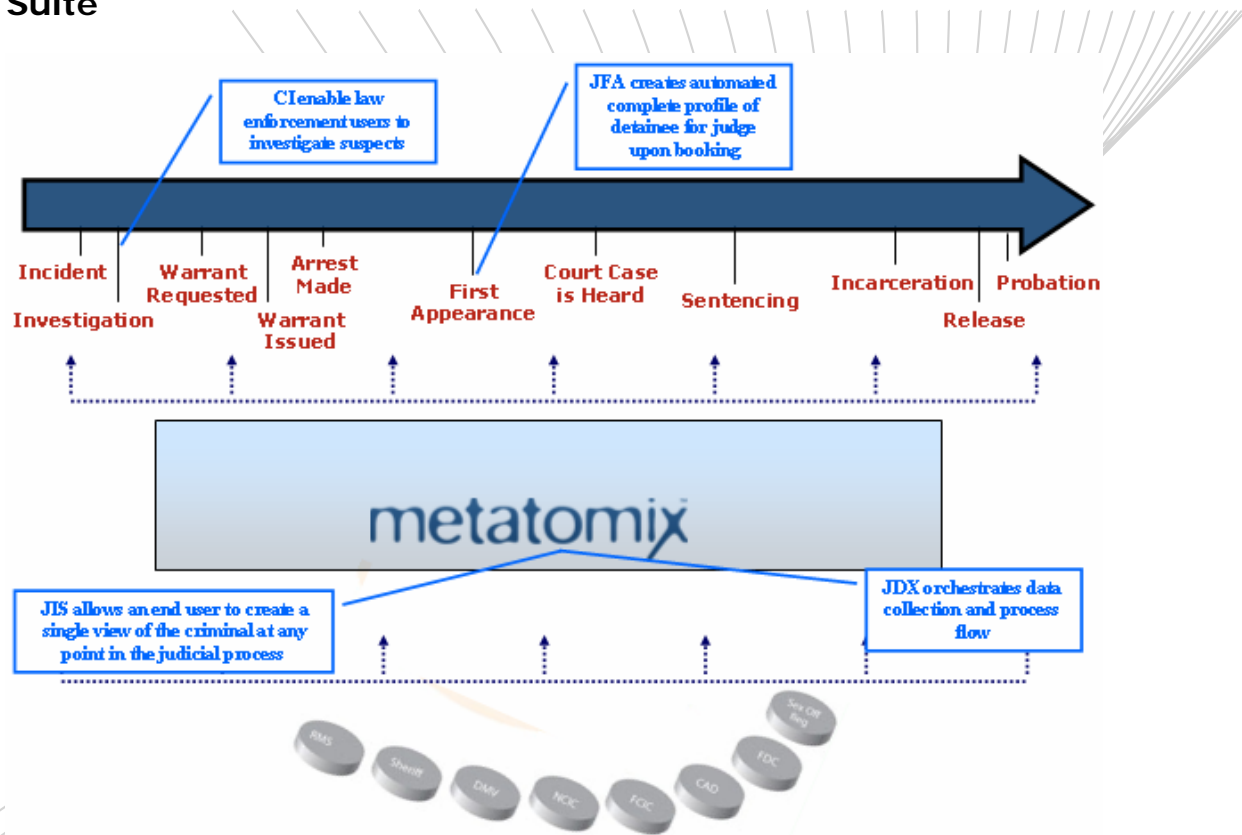
- Significant time savings investigating crime
- Comprehensive subject profiles
- Data source owners retain control of existing systems and processes
- You work more efficiently and criminals are behind bars more quickly
- Advance the level of *information sharing* within your jurisdiction or region

Arm yourself with the right information to combat crime.

metatomix®

Find Data. Find Relationships. Find Meaning. Make Decisions.

Criminal Investigation is Part of the Larger Integrated Justice Suite



- Judicial Inquiry System (JIS) provides real-time criminal and civil history inquiry functionality across local, state, and national systems from a single interface using a single query.
- Judicial First Appearance (JFA), developed to implement components of the Jessica Lunsford Act, provides complete and accurate information to law enforcement booking agents regarding the criminal and civil history of sexual offenders/predators at the time of booking. Further, First Appearance automatically pushes this information to a Dashboard that acts as a judge's First Appearance Calendaring System, ensuring judges receive crucial and timely notification of a suspect's sexual offender/predator status and history.
- Judicial Data Exchange (JDX) provides real-time information exchange between law enforcement, courts, and attorneys to automate manual processes, eliminate duplicate data entry, improve data quality, and increase the efficiency and accuracy during the judicial process.



Find Data. Find Relationships. Find Meaning. Make Decisions.

About Metatomix

The Metatomix Semantic Platform integrates data, uncovers and defines information relationships, and provides meaning and actionable insight to applications. It does so by creating a real-time virtual integration layer that non-invasively accesses data from any source (static and dynamic) and allows it to be understood & leveraged by practically any application.

METATOMIX SNAPSHOT

- *Founded in 2000*
- *Headquarters Dedham, MA*
- *Offices in Atlanta, London, Memphis, and San Francisco*
- *4 existing patents, 4 more pending*
- *Semantic Technology Leadership*